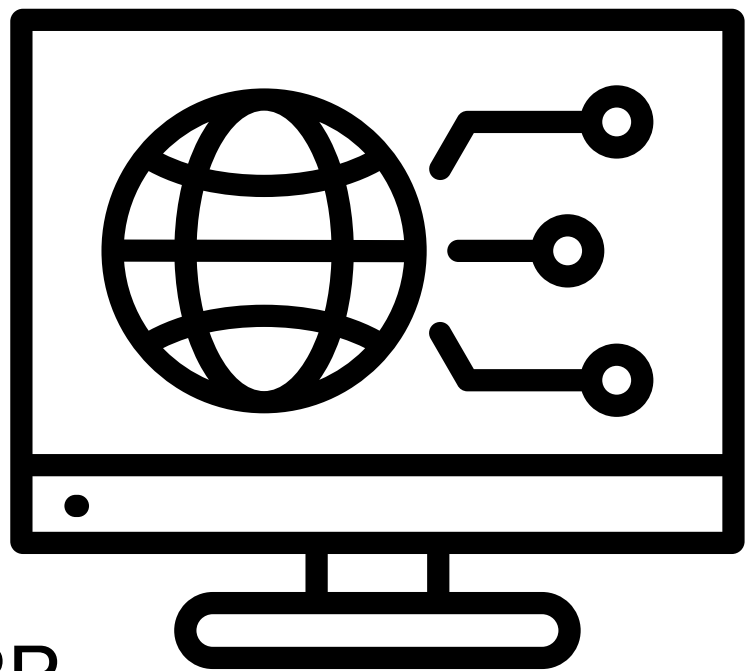


Giving Power To People Through Technology



**BISAN ERP
HI-TECH SERVICES**



A Cloud Based ERP solution that grows with your advancing Hi-Tech services. A dynamic, scalable, and reliable ERP system offering comprehensive financial management. It supports multiple languages and currencies, in addition to a full audit trail.

This solution is crafted to meet the unique needs of the Hi-Tech service providers, supporting a seamless flow of information and facilitating data-driven decision-making.

Special Features

- Unique advanced search by keywords
- Macro-recorder automation tool for recurring transactions
- Split views of multiple screens of open tabs
- User defined HTML forms
- Customized user defined shortcuts and icons
- Dashboard including various widgets
- Data import and export capabilities



Financial Management



- General Ledger
- User-defined Accounts with unlimited number of Segments
- Accounts Receivable & Accounts Payable
- Automatic Depreciation Calculation
- Automatic Bank Reconciliation & Checks Management
- Check Printing & Bank Transfer Forms
- Revenue & Expenditure Allocation
- Full set of Financial Statements Reports



Multi lingual & Multi currency

- Available in eight languages and defined as per your preference
- Switching between languages anytime while logged in
- Multi currency with currency variance calculations
- Ability to extract reports in any definable currency





Users

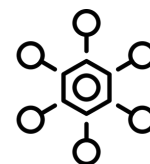
- Five (5) concurrent users with the ability to define an unlimited number of named users
- Definable access rights for each user within his/her duties or department
- Option to add users as needed

Fixed Assets Management



- Manage the entire lifecycle of assets
- Manage asset purchases such as laptop devices, cars, and other devices
- Flexible location structure
- Custody Management
- Fixed assets count
- Asset disposal management

Multiple Segments



- Unlimited number of account segments
- Flexibility of tracking transactions to the smallest detail
- Ability to customize segmented accounts to meet management needs, whether by department, project, cost center, currency or any criteria

HR and Payroll



- Organizational structure
- Employee profile
- Absence management
- Performance evaluation
- Self service portal
- Attendance; building a working schedule per group/employee
- Direct integration with attendance clock
- Building flexible formulas for payments and salaries
- Payroll Tax deductions
- Sending pay slips for each employee by email
- Full vacation management
- Recruitment

Audit Trail



- All authorized users can view all historical changes of any piece of data
- All changes in the system are audited on a field level

Document attachment



- Ability to attach any file type to transactions
- Attaching the item's picture to the item's file

Reporting & Drill Down



- A large number of financial and management reports
- Yearly and periodic reports
- Drill Down functionality in all reports to the finest detail

System Notifications, sending SMS and Email



- User definable notifications within the system for all users
- Sending SMS messaging
- Sending Emails with attached transactions such as pay slips, receipt vouchers among others